

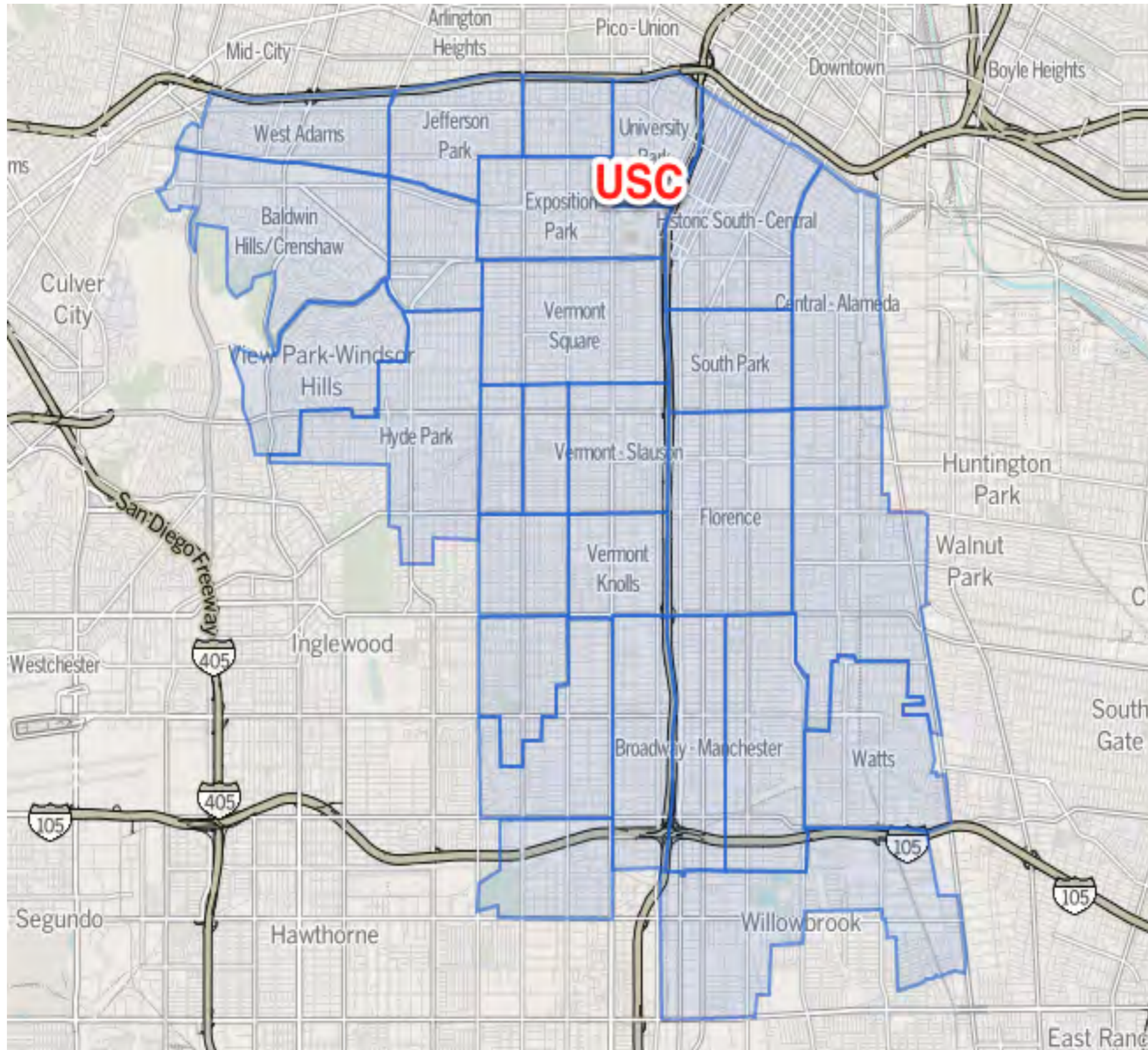


COMMUNITY REPORTING

Intersections South LA

www.IntersectionsSouthLA.org

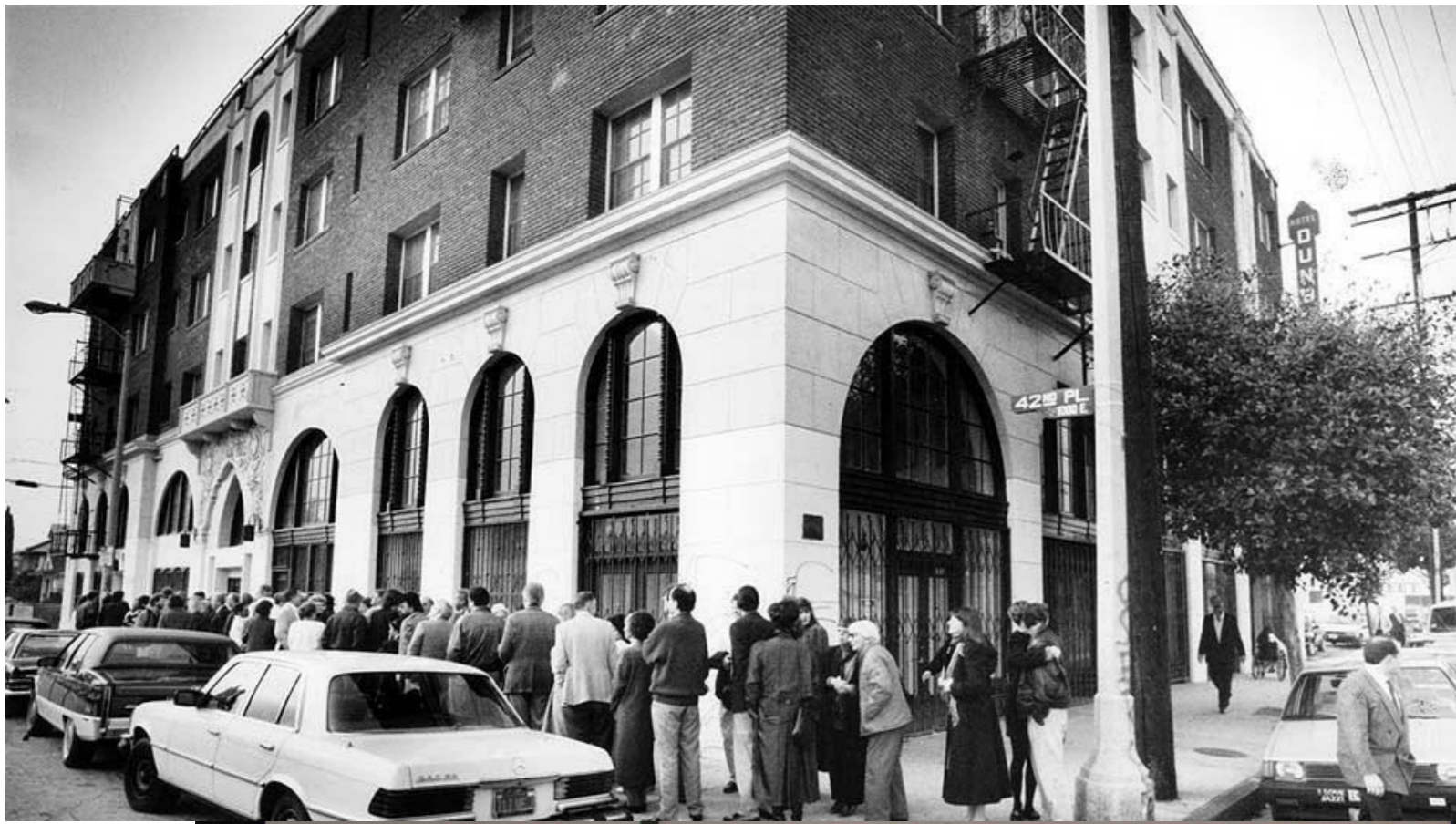
South Los Angeles



A SNAPSHOT OF 1938...

Black, Asian,
Latino and
White
students fill
the 1938
yearbook for
Jefferson High

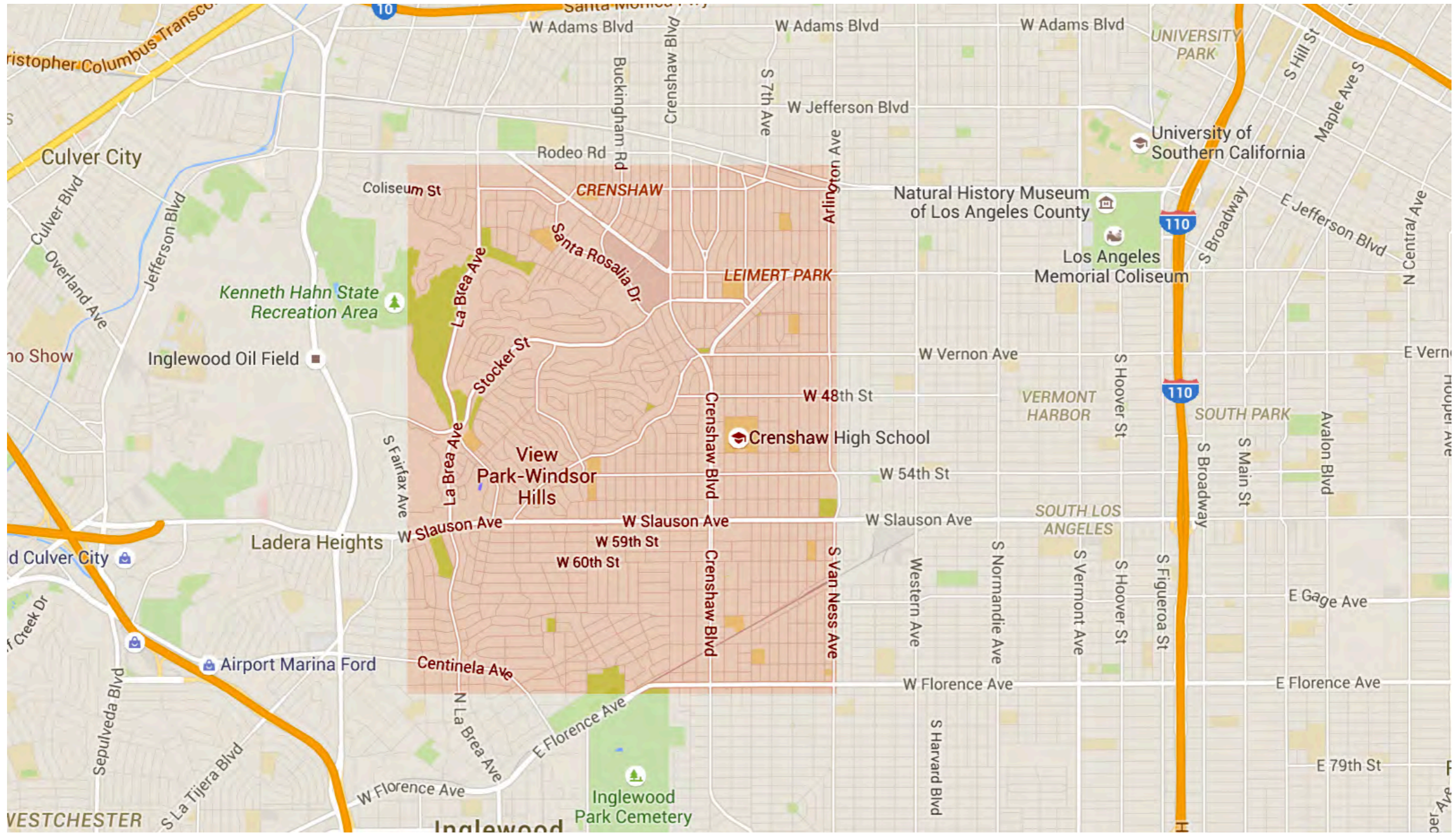




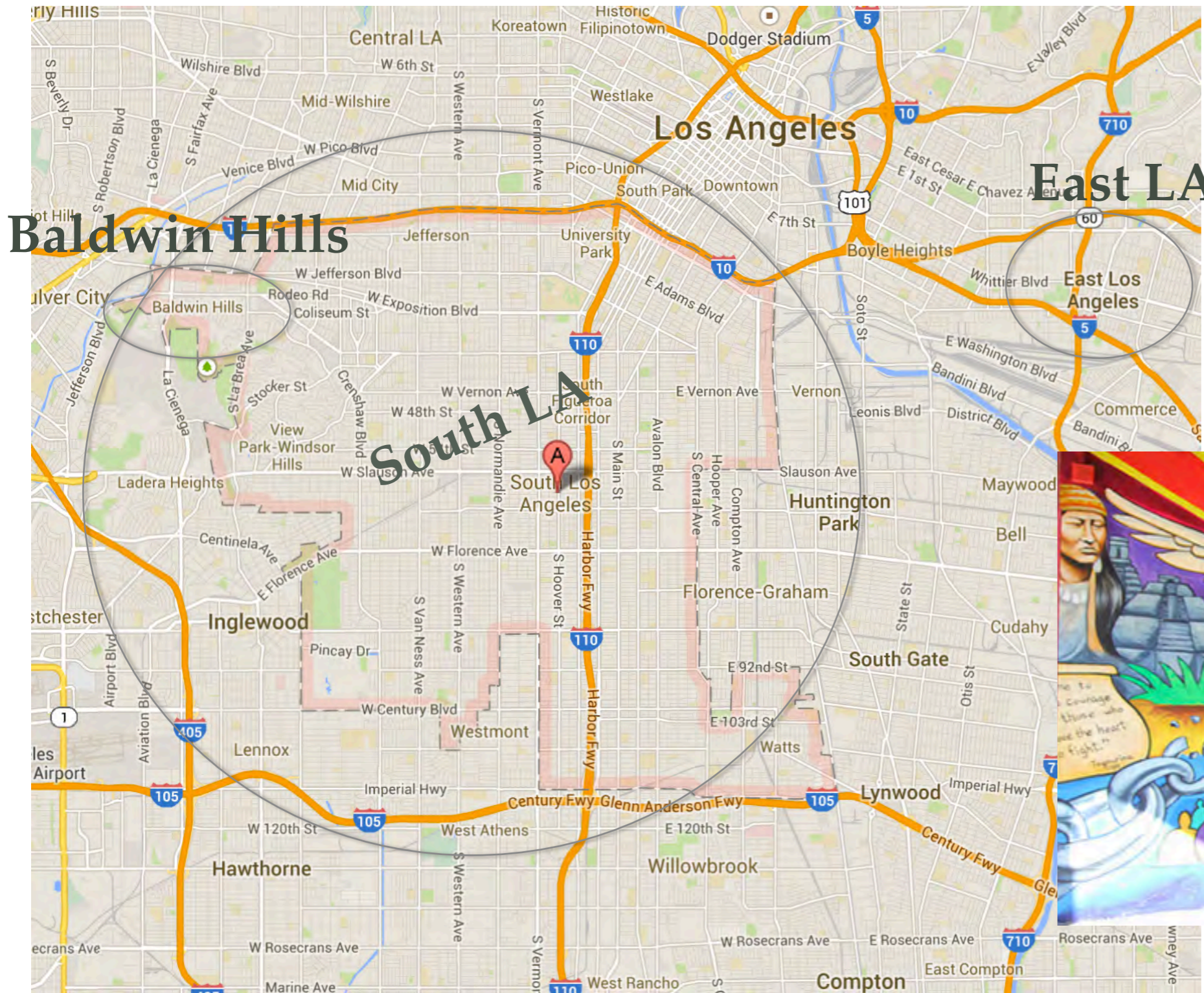
Billie Holiday singing at a club on Central Avenue, in "South Central"



Covenants restricted Black, Asian, Mexican and Jewish ownership



1965: Immigration Act



South LA mural highlights blend of cultures



1965: WATTS RIOTS



wattsrevisited.org

1970s – 1980s: Unemployment, gangs and drugs



1991: LATASHA HARLINS DEATH



1991: RODNEY KING BEATING



1992: LA RIOTS

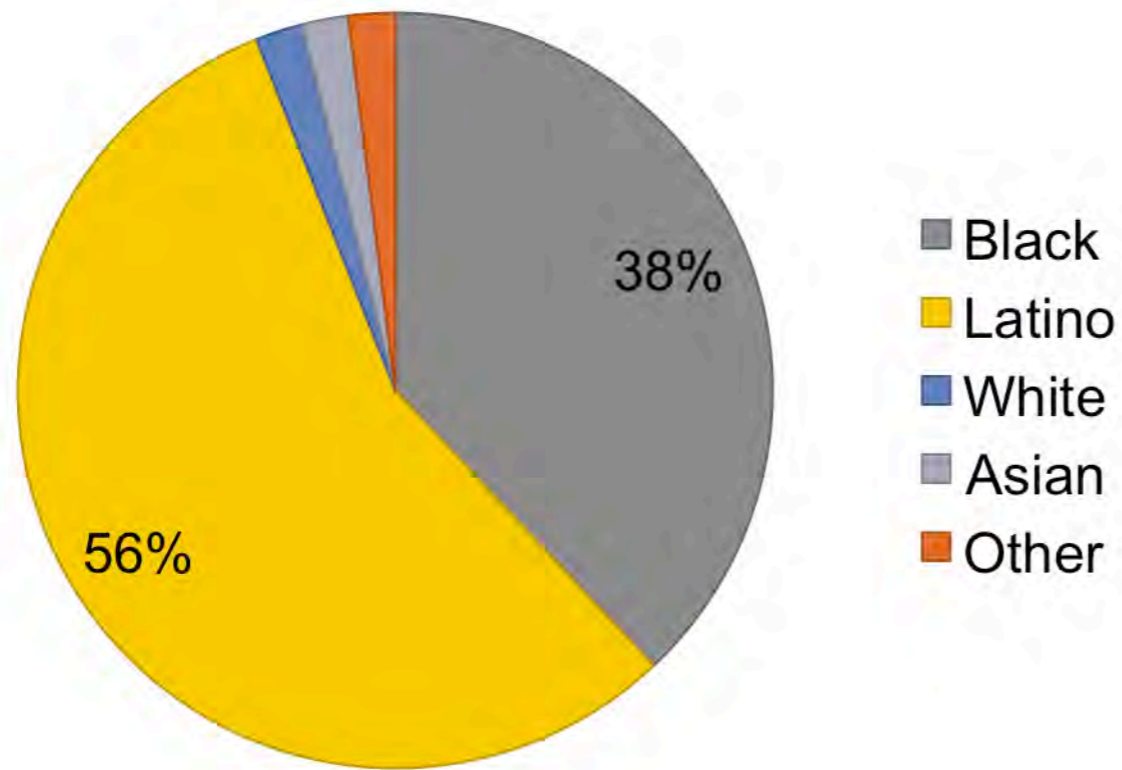
“LA Uprising,” “Civil Disturbance,”
“Rodney King Riots”

53 people dead over three days.



SNAPSHOT: SOUTH LA

Demographics



South L.A. contains **28 neighborhoods**, according to the [LA Times](#) mapping project.

Nearly a million people live in South L.A.

SOUTH LA TODAY

New York Times

Mapping America: Every City, Every Block

Find something interesting? Share this view on [Twitter](#) or [Facebook](#)

The local data from the Census Bureau's American Community Survey, based on samples from 2005 to 2009. Because these figures are based on samples, they are subject to a margin of error, particularly in places with a low population, and are best regarded as estimates.

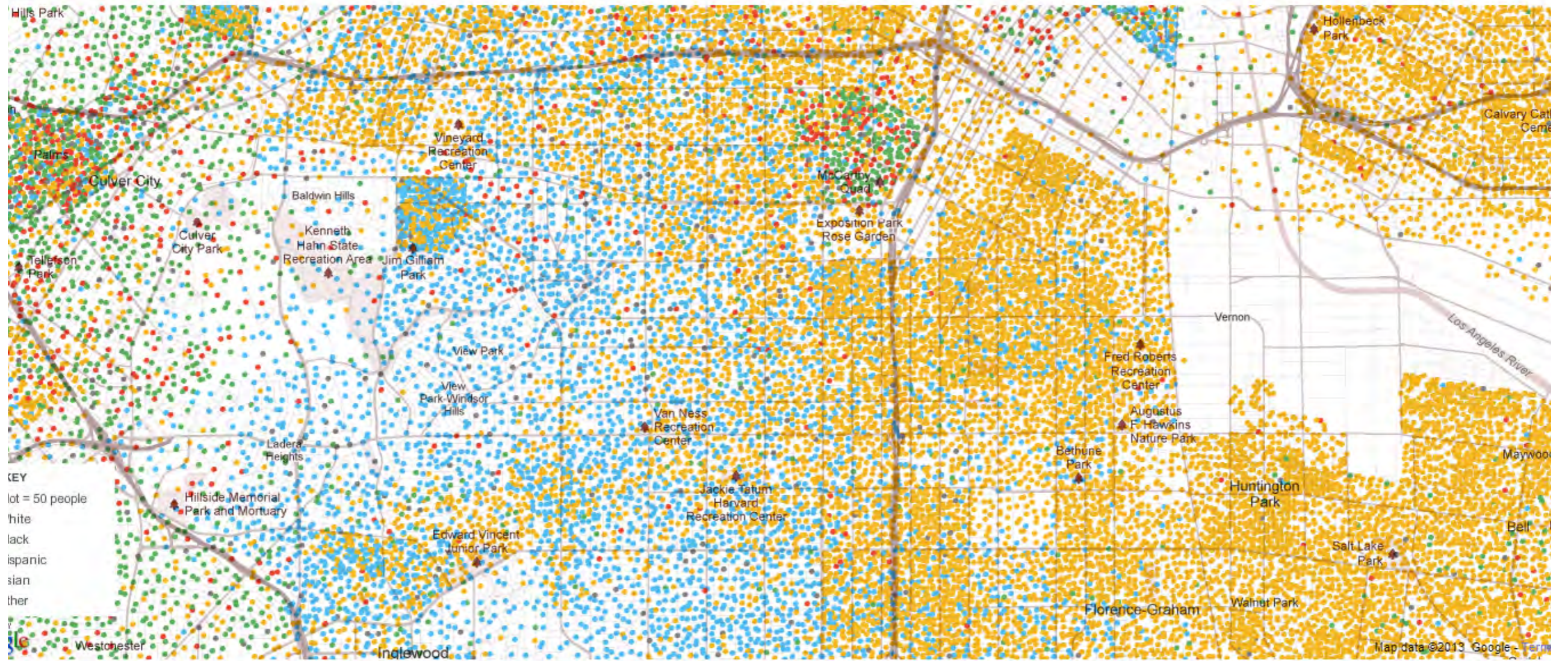
[View Readers Map](#)

Distribution of racial and ethnic groups

[View More Maps](#)

Los Angeles, CA 90007

Go



THEW BLOCH, SHAN CARTER and ALAN McLEAN | Source: 2005-9 American Community Survey, Census Bureau; [socialexplorer.com](#)

Note: Dots are evenly distributed across each Census tract county. Dollar amounts are adjusted for inflation.



MY SOUTH LA IS...

Something I would
like to explore!



MY SOUTH LA IS...

AWESOME

≠
GETTING

AWESOMER...

GETTING TO KNOW A NEW COMMUNITY

- **Community data:** Census, American Community Survey, LA Times or local governments are key sources.
 - <http://factfinder2.census.gov>
 - <http://censusreporter.org>
 - <http://maps.latimes.com/neighborhoods>

More tips on intersectionssouthla.org

GETTING TO KNOW A NEW COMMUNITY

- **Community organizations and non-profits**
- **Follow local media, including social media**
- **Local government:**
 - City Council: <http://council.lacity.org>
 - Board of Supervisors: <http://bos.co.la.ca.us>
 - Neighborhood Councils: <http://empowerla.org/councils>
- **Law enforcement:**
 - LAPD: <http://www.lapdonline.org/>
 - County Sheriff: <http://sheriff.lacounty.gov/wps/portal/lasd>
- **Go to the community:** hang out, go to events, eat at local restaurants, look at bulletin boards

More tips on intersectionssouthla.org

COMMUNITY REPORTING

- Be aware of your cultural biases and preconceptions
- Understand explicit and implicit stereotypes
- Approach sources as individuals
- Be open, aware and curious
- Tap into community orgs and neighborhood leaders to help you



ADVICE FROM REPORTER CORPS



REPORTING SAFETY TIPS

- Stay in well-trafficked public places, restaurants are good
- Bring a reporting partner
- Find an “informant” or “fixer”
- Contact the local police precinct
- Make sure someone knows where you have gone
- Know where you are going

SEE COMPLETE LIST OF SAFETY TIPS

WORKING FOR CHANGE IN SOUTH LA: OSCAR MENJIVAR



**TEENS EXPLORING
TECHNOLOGY**